



*ROADMAP OF  
OUR TIME:*

- *Challenges*
- *One case study of classroom connecting with community*
- *Ethical considerations*
- *Possibilities*

*THANK YOU FOR  
BEING HERE.*



# HEARING FROM OUR COMMUNITY

When you were an undergraduate student, what is an example of really wonderful teaching you encountered the classroom? What made it so impactful for you?”





*CLASS  
ROOM*

What are some of the biggest challenges you encounter in the classroom?





# People's Scholarship

Making the road by walking



*Participatory  
Education*

*Freire*

*Myles  
Horton*

*bell hooks*



# JAILHOUSE LAWYERS INITIATIVE (JLI)

Bernstein Institute of  
Human Rights at NYU LAW

*Jhody Polk*



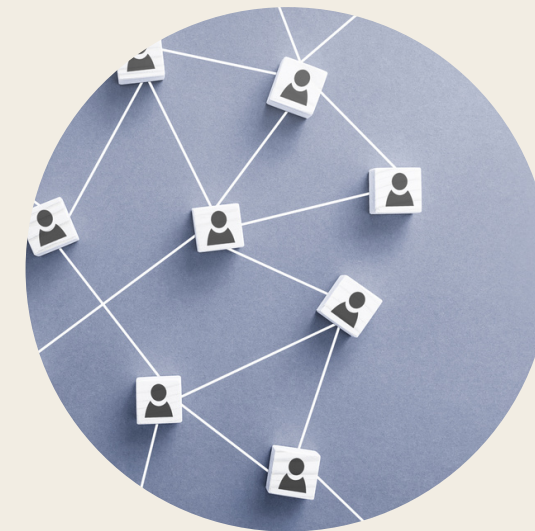
Founder

*Jailhouse Lawyers Fill a  
Vital Justice Need*



Lack of access to justice once  
incarcerated, unless wealthy.

*JLI is a community by and  
for inside justice advocates*





Providing co-constructed resources to  
support their legal work and creating a  
sense of community.




# LETTERS

From justice advocates on the inside detail the important work they are doing with limited access to information.



The impact of isolation on wellbeing.

The intersection of disability and incarceration.



The role critical consciousness plays in survival within such violent spaces.



# RESEARCH METHODS

Participatory Education in the service of community

○ *Goal is for students*

to experience deep, transformative learning.  
To know they matter and why their perspective is necessary.  
To make academic information accessible to communities.

*Building groups*

Investment of time here really matters.

*Identifying Issue*

Group reads and analyzes for broad theme to build their work around.

*Search Plan*

What are the search terms, databases, and spaces outside of academia?

*Annotated bibliographies*

Accessible summaries of the studies/articles and why it relates to the letter.

*Analyze for gap*

What voices are missing? What kinds of knowledge are overvalued?

*Design study to fill gap*

full research proposal

*Draft report and present*

Presentation is tailored to policy makers



A wide-angle photograph of a rocky, light-colored dirt path winding through a desert landscape. The path is composed of many small, light-colored stones and pebbles. In the background, there are several large, brown, rocky mountains under a clear blue sky. Sparse green and yellow desert vegetation is scattered along the path and on the slopes.

*REFLECT*

ETHICAL  
considerations?

what concerns do you have about the ethics  
of scholarship in service of communities?



*treading with care:*  
ETHICAL CAUTIONS

*recognizing the  
limits of academia*

gatekeeping has erased and barred  
essential perspectives

*resisting hierarchies  
of knowing*

academic information can create  
implicit hierarchies further marginalizing  
community expertise

*interrogating  
academic elitism*

Why are certain ways of expressing  
knowledge





DISCUSS

1

*How are you making these connections in your classroom?*

2

*What are ways you imagine doing this in the future?*

3

*What is a barrier that you are anticipating to this work?*



# FROM WHAT DO YOU KNOW? TO WHAT DO YOU THINK?



*How can we as facilitators of these learning communities support participatory education? How can we create a culture of inquiry?*

Relationality

Flexible of mind and curiosity

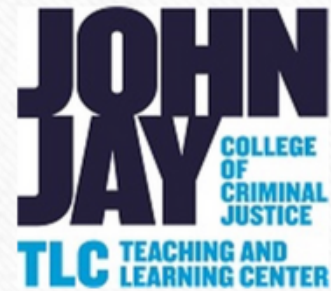
Nonattachment, can't force a storyline or an outcome

Presence – unscripted but can be rehearsed

Allow for unease, not knowing, and ambiguity by allowing for silence

Allow ourselves to be changed – a new insight a surprise





THANKS FOR JOINING US!

---

Before You Leave Us:

- Post your screenshots, quotes, and insights to share on Twitter and Instagram:  
@JohnJayTLC #JJC-FDD
- Make notes of who you met and what you learned: keep track of what inspires you!
- Complete the FDD Feedback survey: we will email you a link
- Keep an eye on your faculty email for TLC announcements:)

Fall 2023

Faculty Development Day

*NEXT UP:*

*Coffee, Cookies, & Conversation  
(Faculty/Staff Dining Room)*

*CUNY Brightspace Overview  
(Zoom: check your email)*

